

Our Place in the Environment in 2025

Giselle Howard

Department of Environment and
Conservation



Giselle Howard – Profile

DEC – an amalgam of EPA/ NPWS & Resource NSW, Manager
Metropolitan Projects and Support

Ecologist – interests HABITAT, wetlands, rivers, water, groundwater

Environmental management – URBAN context – 15 years

Parramatta RESIDENT – previously 7 years – Harris Park & Pendle Hill

Parra CBD worker – 10 years in various jobs – Council Childcare Service
User

COMMUNITY ORGANISATIONS – involvement in Parra for 10 years

SPOUSE of a youth worker/ former streetworker of 10 years in Parra CBD
with youth 12 to 25 years of age

Water

- “ The ongoing drought has seen inflows to Sydney’s dams drop to their lowest since 1939. The Warragamba Catchment received less than 60% of the long term average annual rainfall in 2004 and April 2005 was Sydney’s hottest April on record.” Sydney Water 31 May 2005



Water - Your Influence?

- Building design
- Watering regimes
- Local resource protection

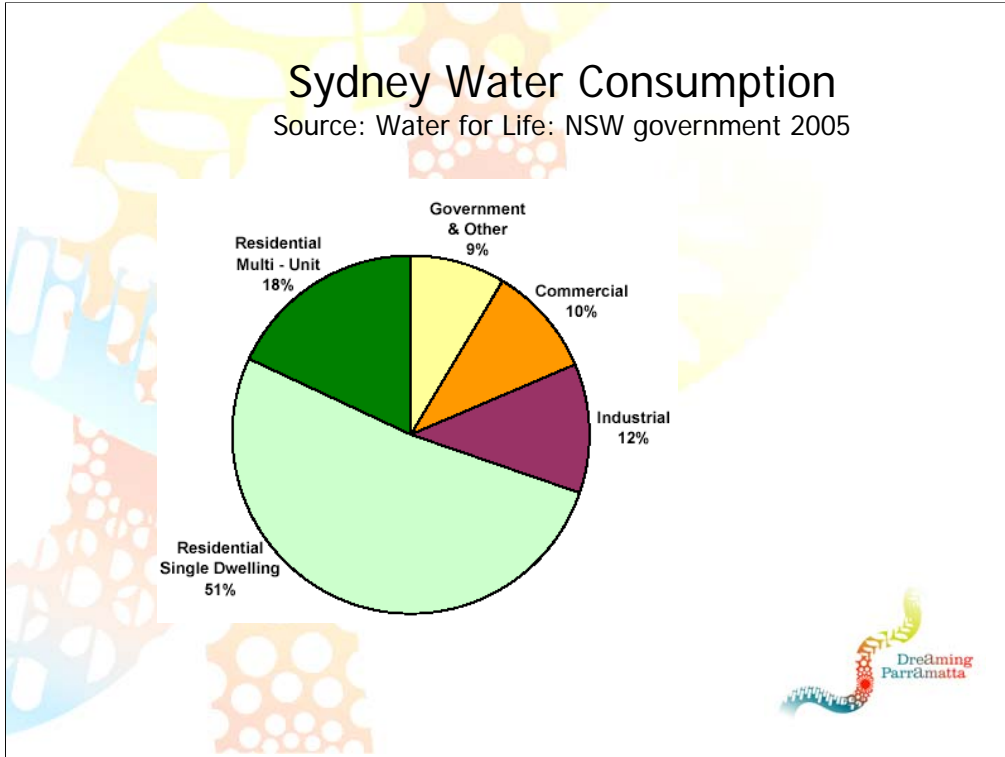


What will you demand for your city?

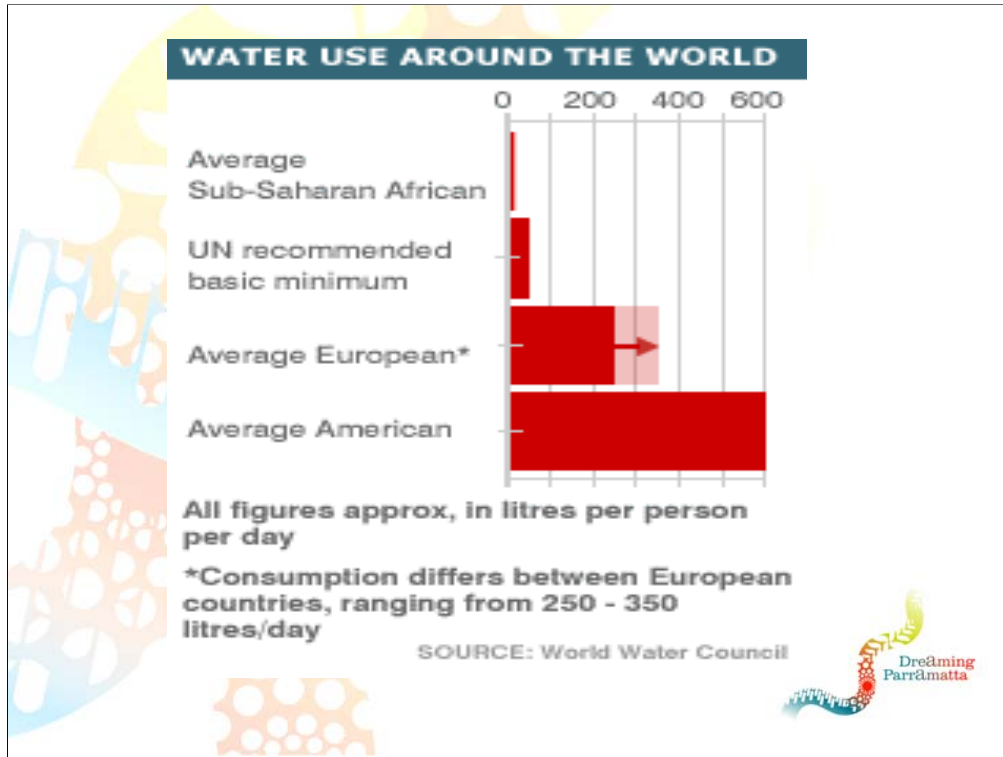
The form of residential, commercial and industrial buildings – eg. water saving requirements & landscaping

Water Regimes – individual and council water use eg. not just mains supply, river water (sustainable consumption), industry re-use

Local Resource protection – eg. air – vehicle use in the city, groundwater supply protection and use, or contamination/ remediation and surface water and land link – old industrial areas



2/3 is residential so Parramatta residents have a significant role to play including as influencers built form



Sydney – av. 350 L per person per day (point out on graph – top end of the “Average European” graphed, yet the water regimes of our rivers should push us back toward drier continents of the world)

We are living beyond our means

Monolith of Sydney with all the engines churning away to support it from Nowra (they are sick of us transferring their water)

to Goulburn (so are they)

to Lithgow (Fish River water in & supplying coal fired power at a big cost to Lithgow's/ NSW and Aust. air quality)

To the Capertee and right around to Gosford and Pittwater with significant land & marine biodiversity banks, being run down (crushed sandstone mining for construction and flushing of the river)

So what about for Parramatta?

Again I ask – what will you demand for your city?

Water - Your Own Response?

Have you, for example:

- Mulched the garden
- Gone to shorter showers (8 mins is 72 litres)
- Installed a rainwater tank (5000L)
- Encouraged family members to minimise water use – all areas



Note: the average water consumption per person per day is 350L, so a 20 min shower will take about half of this

The minimum size for rainwater tanks is about 5000 L – roof water capture

It is possible to bring about change – I mentioned Goulburn and that they are sick of Sydney's water demands too because they are part of our water supply

They are on Level 5 restrictions

They have the equivalent of one bathtub full of water per household per day

One 20 min shower by a Parramatta resident would take more than half of that allocation – no one makes us accountable for that extravagance – it is clearly not sustainable use

And then options like the Desalination Plant enter the picture....

I ask you to think once again – what will be your own response?

Population Pressures

- " Population projections to the year 2026 show Parramatta's average population growth is expected to increase by 0.8% per annum to a population of 178,829 persons."

Parramatta Biz Facts 2005



Population - Your Response?

- Meet your neighbours
- Encourage a sense of community
- Get involved in local groups
- Talk with others about the issues we face with these pressures
- Plant some trees in your yard and be a responsible pet owner



Lets tease out those figures

Sydney – 110 people and 40 homes per day

Parramatta - > 3 people per day for the next 20 years

This is largely **infill and redevelopment** - which is hard to envisage.

So... lets imagine a new street with no houses instead – think of **3 people per day moving in (say one house every day)** arriving with their moving vans

Lets imagine you're the first house in the street

By the **end of the week** from your front yard you can just see past the new houses and people to the end of your block (few houses each side)

By the **end of the month** you have houses stretching before you on both sides for one city block length

Assuming a straight line - This continues **every year** – 12 city blocks – or almost the distance from Central to Circular Quay, a 20 minute walk

- but for the next 20 years!

Development Pressures

- In 2004-05, Council staff processed 1,607 applications for development within the local government area."

Parramatta City Council Annual Report 2003-04



Development – Your Influence?

- Building form – eg. material used/ heat/ aspect
- Addressing the related issues – eg. vegetation loss on private land
- Amenity – Noise, odour... quality of life



This is not greenfield development

Every redevelopment is an opportunity – but only if you have your direction well defined and transparent process mapped out for all to see

(Anecdote of Claycliff Creek and the major grocery outlet development at Rose Hill that occurred

Good enough a spot for the Macarthurs to have a home with the first settlements, homestead next to this creek

Enclose a creek and it is critically compromised – this had already occurred

Build over a creek and you will never afford to reopen it – market forces will be fully at play

Yet this creek to is part of the circulatory system of a developing city. Its 'life blood' – (the river continuum) – Germany and part of Bavaria have realised this and are trying with very limited space and funds to reopen the length of the creek line for the health of the receiving waters.)

Higher Densities of development and **amenity issues**– the services and social links with planning are critical

Part of my daytime job is as a regulator for air, noise and water pollution

-Huge resourcing needed to address noise and odour **after the fact**– highest single issues for DEC's Pollution Line (or now Environment Line)

-No satisfactory outcomes for these eg. Air conditioners/ school bells and alarms/ dogs barking/ food shops – hot chickens/ coffee roasters, blowers and street cleaners for residential over commercial

Development -Your Response?

- Read the local paper
 - Make comments on plans and proposals
 - Get a sense of the things that need valuing and protecting...
- ... the partnerships rest with you too.



AGAIN

Every redevelopment is an opportunity – but only if you have your direction well defined....

So what makes this place of Parramatta special and different

For me - I see a life blood of creeks, vegetation corridors & parklands weaving their way thru the centre.

I see Sydney Harbour arriving at Parramatta's doorstep....

You know - There **used to be** bandicoots at Epping only a few generations ago.. I've seen them (no I'm not that old!!!) – they're in a filing drawer in the Australian Museum in Sydney....Ku-ring- gai and Manly still has the last of our living bandicoots for Sydney for now....

There **are** native fish in the river in the Parramatta CBD and beyond, there **are** snakes in the bush in Northmead and Lake Parramatta still, there **are** whales in the Harbour each year now....**these are ecosystems still in tact** but pressured.....it's exciting and you are part of making a difference But only if we focus on what is special and how to keep it.